

## QUALITY

Winnebago RVs are designed and built around you, with superior craftsmanship, advanced manufacturing technologies and steel-focused construction to enhance safety and reliability.

## INNOVATION

From groundbreaking RVs to game-changing features to the spacious floorplans made possible by our SmartSpace™ design, our heritage is unrivaled for continuous industry firsts in vehicle technology and design.

## SERVICE

Our carefully chosen dealers are supported by factory training and our advanced parts supply system, while owners benefit from excellent real-world customer support as well as 24/7 access to online technical information.

## BELONGING

Winnebago owners are a connected community – some of the friendliest, most knowledgeable and welcoming RVers you'll find anywhere.

**WINNEBAGO**



©2025 Winnebago

**WINNEBAGO**

FORZA





## Discover More Freedom in the Forza.

---

Feeling the pull of a diesel pusher?  
The Winnebago Forza® delivers all the power,  
performance upgrades, and enhanced ride  
quality you're looking for, along with the  
versatility, convenience, and value to take  
your adventures to the next level.



Set Your  
Sights on Your  
Next Great  
Adventure.



### **Purpose Built. Power to Spare.**

The Forza combines the rugged Freightliner® XCS chassis with our signature steel SuperStructure® for uncompromising ride quality, while the 340-hp Cummins® ISB engine delivers superior towing power.

### **More Room to Move**

Choose from three spacious and remarkably versatile floorplans, featuring up to three slideouts, two baths, and accommodations for up to eight overnight guests. Engineered for entertaining, the Forza offers an expansive living area, available theater seating, and ample storage throughout.

### **A Whole New Point of View**

Superior comfort meets next-gen technology inside the Forza cab. From multi-adjustable recline and fixed lumbar support to full Apple CarPlay® integration and USB/HDMI connectivity, there's zero compromise at the wheel. The OptiView™ dash system features fully integrated gauges, touch-screen controls, and a 360° camera system.

### **Radio/Rearview Monitor System**

With a 9" LCD color touch screen, handheld remote, rear color camera, SiriusXM®-readiness, USB input, HDMI/MHL connectivity, Apple CarPlay®, and Android Auto™, you have entertainment and premium features right at your fingertips.



## A Beauty, More than Skin-Deep.

With more sophisticated styling and a host of exterior updates, the newest Forza shines in any environment. Available in lengths from 35'6" to 39'10", the Forza offers plenty of secure, easily accessible storage — plus an array of features to make every stay more comfortable and enjoyable.

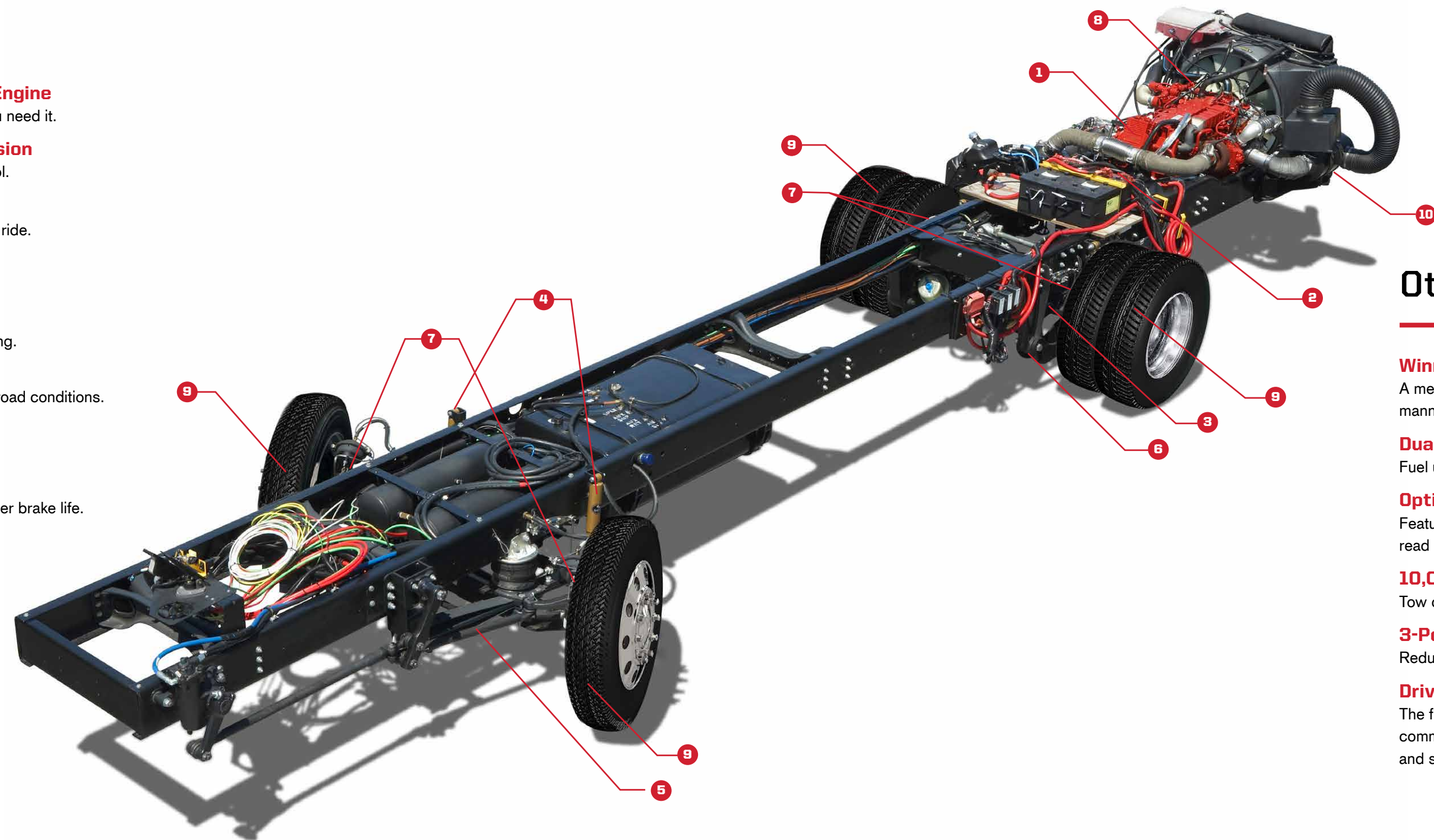
- 1** Premium high-gloss sidewalls, highlighted with new full-body exterior paint for a more contemporary look.
- 2** Up to 228 cu. ft. of lighted, heated, and lined exterior storage, including a large pass-through storage bay. Side-hinged doors and rotary-style latches provide a more secure closure.
- 3** 10,000-lb. drawbar trailer hitch with a 500-lb. maximum vertical tongue weight and 7-pin trailer wiring.
- 4** Stylish aluminum wheels reduce unsprung weight compared to steel wheels.
- 5** Shorter 12' exterior height improves crosswind stability while still allowing 6'8" interior ceilings.
- 6** Powered patio awning with LED lighting, supplemented by an additional powered awning with LED lighting (34T), or a separate powered awning shielding the entrance door (36H, 38W).
- 7** Full-perimeter ground effects lighting package provides soft ambient lighting.
- 8** Exterior compartment with 110VAC power, TV antenna, and 3-way A/V receptacles — ready for the available exterior entertainment center and its 32" HDTV.
- 9** PetPal leash tie-down.





# Freightliner® XCS Chassis

- 1 Cummins® ISB 6.7L 340HP “Clean Air Diesel” Engine**  
Delivers 700 lb.-ft. of torque for hill-climbing power when you need it.
- 2 Allison® 2500M 6-Speed Automatic Transmission**  
Operated via DriveTech's right-hand, column-mounted control.
- 3 Rear Axle**  
Features proprietary machined gears for a smoother, quieter ride.
- 4 Sachs® Shocks**  
Enhance control while delivering a smooth ride.
- 5 Neway® Front Air Suspension**  
Absorbs bumps for a comfortable ride and consistent handling.
- 6 Freightliner® V-Ride® Rear Suspension**  
Delivers superior roll stability and predictable handling in all road conditions.
- 7 4-Wheel ABS Anti-Lock Air Brakes**  
Provide safe, reliable stopping power.
- 8 Exhaust Safe Brake**  
Uses engine compression to slow the coach, promoting longer brake life.
- 9 Michelin® Tires**  
Paired with polished aluminum wheels.
- 10 Freightliner® BrakeSync**  
A factory-installed, factory-warranted supplemental braking system for your tow vehicle.



## Other Key Features

- Winnebago SuperStructure®**  
A metal framework integrated with the XCS chassis delivers a well-mannered ride while providing up to 228 cu. ft. of exterior storage.
- Dual-Fill Fuel Tank**  
Fuel up from either side of your Forza—whichever is more convenient.
- OptiView™ Digital Instrument Cluster**  
Features adjustable brightness, an anti-glare display, and an easy-to-read interface.
- 10,000-lb. Trailer Hitch**  
Tow confidently with robust capacity and reliability.
- 3-Point Engine Mounting**  
Reduces engine vibration for a smoother, quieter ride.
- DriveTech Customizable System**  
The first RV driving system designed to maximize safety by placing every command in one easy-to-reach location—creating an automotive-like feel and setting the industry standard for luxury RV driving.



# Step Into Your New Comfort Zone: Outside the Forza.

With intelligent exterior storage and space-extending built-ins, the Forza helps you pack more into every outdoor moment.

**Store More**  
Up to 228 cu. ft. of integrated exterior storage ensures nothing gets left off your packing list.

**Stay Fresh**  
An exterior wash station keeps your gear clean and ready for tomorrow.

**Turn Heads**  
The dynamic graphics package is a real head-turner — from highway to campsite, sunup to sundown.

**Create More Space**  
Innovative powered armless awnings ensure you and the entire crew have it made in the shade.

**Take It Outside**  
With ground effects lighting to help set the mood, the available exterior entertainment system transforms the patio area into the ultimate outdoor entertainment space.







## Fully Equipped. To Far Exceed.

### Binge Ready

The 50" HDTV — paired with options for theater seating, a sofa, or a sofa/sleeper — makes any night perfect for a movie night in.

### The Right Touch

Ultrafabrics® furnishings and plank flooring deliver an upscale feel to the living space, highlighted throughout by well-appointed LED ceiling lights.

### Dine In. Roll Out.

Generous storage, Corian® countertops, and a standard 2-door residential-style refrigerator create an uncompromising galley experience.

### Details Done Well

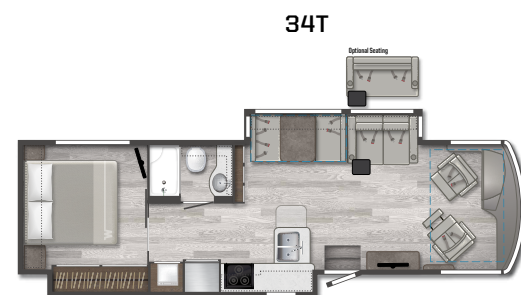
A spacious shower (two in the 38W) with textured glass door, skylight, and plenty of linen storage ensures the bath — along with the available washer/dryer — is intelligently integrated into each floorplan.

### Hello, Good Nights

Using the control panel, the standard king bed in the 34T (optional in the 36H) adjusts side-to-side to provide walkaround space on either side. The optional StudioLoft™ bed up front, along with bunk beds (38W) and a room-divider curtain, allows the Forza to comfortably accommodate up to eight overnight guests. And everyone will rest easier with wireless phone chargers built into each nightstand.



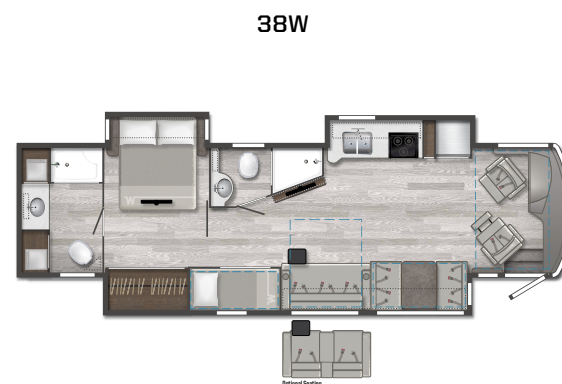
Floorplan Shown: 34T



34T



36H



38W

Dotted lines denote overhead storage area. Blue dashed lines denote sleeping areas. Floorplans are representations only and are subject to change. Please contact a certified Winnebago dealer for more information.





WINNEBAGO

FORZA / Specifications

WEIGHTS & MEASURES	34T	36H	38W
Exterior Length	35'6"	37'9"	39'11"
Exterior Height¹	12'	12'	12'
Exterior Width²	8'5.5"	8'5.5"	8'5.5"
Exterior Storage³ (cu. ft.)	153	222	228
Awning Length	17'2"	11'9"	20'
Interior Height	6'8"	6'8"	6'8"
Interior Width	8'0.5"	8'0.5"	8'0.5"
Freshwater Tank Capacity⁴ (gal.)	84	84	100
Water Heater Capacity (gal.)	10	10	10
Holding Tank Capacity - Black/Gray⁴ (gal.)	48/54	48/44	49/48A/51B
LP Capacity⁵ (lbs.)	97.29	97.29	97.29
Fuel Capacity (gal.)	90	90	90
GCWR⁶ (lbs.)	33,000	33,000	33,000
GVWR (lbs.)	26,000	27,910	29,410
GAWR – Front (lbs.)	10,410	10,410	10,410
GAWR – Rear (lbs.)	17,500	17,500	19,000
Wheelbase	208"	236"	260"
Sleeps⁷	5	6	8

A Master Bathroom    B Mid-Coach Bathroom

## Chassis

26,000-lb. Freightliner® XCS chassis, Allison® 6-speed automatic 2500 MH transmission (34T)  
27,910-lb. Freightliner® XCS chassis, Allison® 6-speed automatic 2500 MH transmission (36H)  
29,410-lb. Freightliner® XCS chassis, Allison® 6-speed automatic 2500 MH transmission (38W)  
340-hp Cummins® ISB 6.7L  
NeWay® front air suspension  
V-Ride® rear air suspension  
OptiView™ dash digital instrument panel cluster  
DriveTech driving system  
Tire pressure monitoring system  
160-amp. alternator  
Air brakes w/ABS  
Engine exhaust brake  
Rear cap engine intake screen  
Automatic hydraulic leveling jacks  
7-pin trailer wiring  
Trailer hitch⁶ 10,000-lb. drawbar/5000-lb. maximum vertical tongue weight  
Stylized aluminum wheels  
Slideroom lock system  
Information display center  
SuperStructure® construction design by Winnebago includes interlocking roof/sidewall/floor joints, laser-cut tubing, solid structural aluminum framework, thermo-panel sidewalls, embedded steel backing, and e-coating to protect critical steel components.

## Cab Conveniences

Adjustable cab seats w/swivel, armrests, fixed lumbar support, and multi-adjustable recline  
6-way power assist seat pedestal (driver & passenger seats)  
3-point seat belts  
Radio/Rearview monitor system w/10.1" LCD color touchscreen, handheld remote, rear color camera, Sirius-XM®-ready, Apple CarPlay,® Android Auto™, USB input, and HDMI/MHL connectivity  
Cruise control  
12-volt power supply for CB radio  
Powered blackout roller visor/shade (front windshield)  
Blackout roller shade (driver and passenger windows)  
Chassis/House battery radio power switch  
Power mirrors w/defrost and sideview camera  
Power steering  
TRW® tilt/telescopic steering column w/foot-actuated pedal  
Powered step well cover (N/A 34T)  
Cellphone interface to radio

### OPTIONAL EQUIPMENT

•**Lounger passenger cab seat** w/footrest and flip-up workstation  
**SiriusXM®** (includes 90-day trial subscription) receiver, remote, and antenna  
**JBL® premium audio tuned 360-watt amplifier** w/five speakers including subwoofer

## Interior

50" HDTV  
Theater seating (34T)  
TrueComfort+ and sofa sleeper (36H, 38W)  
BenchMark® dinette  
Satellite system ready  
Multi-plex wall switches  
Digital TV amplified antenna system  
Home theater sound bar system  
Electric fireplace (38W)  
LED ceiling lights  
Blackout roller shades  
Soft vinyl ceiling  
OnePlace® systems center  
Tinted, dual-glazed coach windows  
Dual pane, frameless windows  
Washer and dryer prep  
Assist bar  
Vinyl flooring throughout  
USB chargers (cab, lounge, bedroom)  
Pull-out table (36H)  
Firefly® switch panel (lights up when dark)

### OPTIONAL EQUIPMENT

Washer and dryer  
Winegard Trav'ler® automatic HDTV satellite system for DirecTV® and DISH® Network  
Electric fireplace (34T, 36H)  
Solar/blackout roller shades  
StudioLoft™ bed sleep size for two, 52" x 77" (powered w/ ladder and LED lighting) (300 lb. capacity)  
Theater seating (36H, 38W)

## Galley

Corian® countertops (38W)  
Corian® countertops w/flip-up extension (34T, 36H)  
Corian® sink covers  
2-door 16 cu. ft. 110 VAC residential refrigerator/freezer w/icemaker & flip travel latch (34T, 36H)  
2-door 19 cu. ft. 110 VAC residential refrigerator/freezer w/icemaker & flip travel latch (38W)  
Microwave/convection oven w/range fan and touch control  
3-burner LP range top w/storage below  
Glass bi-fold range cover  
Pantry  
Powered ventilator fan

## Bath

38" x 30" Shower  
30" x 34" Shower (38W mid-coach)  
Flexible handheld showerhead  
Textured glass shower door  
Skylight  
Porcelain toilet w/foot pedal and sprayer (electric flush in 38W rear bath)

Powered roof vent(s)  
Medicine cabinet  
Linen cabinet (N/A 38W)  
Tissue holder  
Towel bar(s)  
Towel ring(s)  
Laminate countertop  
Matching sink cover (38W master bath)

## Bedroom

28" HDTV (38W)  
32" HDTV (34T)  
40" HDTV (36H)  
Queen bed w/WinnSleep® foam mattress and storage below (36H, 38W)  
King bed w/InnoMax® Eurotop Freedom-Air™ mattress w/controllers (36H, 38W)  
Bedspread and pillow shams  
Bunk beds (38W)  
Room divider curtain (bunk beds 38W)  
Headboard  
Wardrobe  
Wireless chargers in each nightstand

### OPTIONAL EQUIPMENT

Queen InnoMax® Eurotop Freedom-Air™ mattress w/controllers (36H, 38W)  
King InnoMax® Eurotop Freedom-Air™ mattress w/controllers (36H)

## Exterior

Powered patio awning w/LED lighting  
2nd powered patio awning w/LED lighting  
Exterior compartment 110-volt duplex, TV antenna and 3-way A/V receptacles  
KeyOne™ lock system  
LED porch light w/interior switch  
Lighted storage compartments  
Automatic entrance steps  
Assist handle  
Lower front protective mask  
PetPal leash tie down  
Premium high-gloss sidewall skin  
QuickPort® service connection hatch (power cord, dump hose and water lines)  
Undercarriage lighting

### OPTIONAL EQUIPMENT

Exterior entertainment center w/32" HDTV

## Heating & Cooling System

2-13,500 BTU air conditioners (1 A/C, 1 A/C w/heat pump) (34T)  
2-15,000 BTU air conditioners (1 A/C, 1 A/C w/heat pump) (36H, 38W)  
35,000 BTU ducted furnace (34T)  
40,000 BTU ducted furnace (36H)  
2-20,000 BTU ducted furnaces (38W)

## Electrical System

Service center w/cable TV input, 50-amp. power cord, shoreline/generator automatic changeover switch, and portable satellite hookup  
2,000-watt inverter/charger w/remote panel with coach battery disconnect switch  
6,000-watt generator  
Auxiliary start circuit  
AC/DC electrical distribution system  
4 deep-cycle Group 31 Marine/RV batteries  
Battery disconnect system (coach and chassis)  
PowerLine® Energy Management System  
Automatic dual-battery charge control  
Automatic generator start system  
Wi-Fi router signal booster

## Plumbing System

Service center w/pressurized city water hookup w/diverter fill, freshwater drain, drainage valves, exterior wash station w/pump switch, holding tank flushing system, and 20' sewer hose  
On-demand water pump  
TrueLevel™ holding tank monitoring system  
Permanent-mount LP tank w/gauge  
Heated holding tank compartment  
Water system winterization package  
Water system filtration package  
TruTank level sensor  
Tankless water heater w/recirculating pump

## Safety

LP, smoke, and carbon monoxide detectors  
Fire extinguisher  
Ground fault interrupter  
High-mount brake lamps  
Daytime running lamps  
Child seat tether anchor

## Warranty⁷

36-month/100,000-mile basic limited warranty⁸  
10-year limited parts-and-labor warranty on fiberglass roof skin⁸

### FOOTNOTES

- The height of each model is measured to the top of the tallest standard feature and is based on the curb weight of a typically equipped unit. The actual height of your vehicle may vary by several inches depending on chassis or equipment variations. Contact your dealer for further information.
- Floorplans feature a wide-body design - over 96". You should be aware that some states restrict access on some or all state roads to 96" in body width. You should confirm the road usage laws in the states of interest to you.
- The load capacity of your motorhome is designated by weight, not by volume, so you cannot necessarily use all available space when loading your motorhome.
- Capacities are based on measurements prior to tank installation. Slight capacity variations can result.
- Capacities shown are the tank manufacturer's listed water capacity (W.C.). Actual filled propane capacity is 80% of listing due to overfilling prevention device on tank.
- Actual towing capacity is dependent on your particular loading and towing circumstances which includes the GVWR, GAWR, and GCWR as well as adequate trailer brakes. Refer to the chassis operator's manual of your motorhome for further towing information.
- See separate chassis warranty.
- See your dealer for complete warranty information.
- Sleeping capacity is the maximum based on a specific floorplan.

Not all items available in combination. See dealer for details.  
Because features, specifications, equipment, and options may vary from those highlighted in this brochure, the buyer is responsible for confirming with the dealer the features, specifications, equipment, and options included on their specific vehicle. In addition, Winnebago's program of continuous product improvement may result in changes to vehicle specifications, equipment, model availability, and price without notice.

## EXTERIORS



Hot Anvil II



Moonlight



Silver Mist II

## DECOR

### Tapestry



Ultraselect Choice: Gray



Driftwood II



Wall Board



Ultraselect Choice: Light Patterned



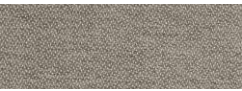
Countertop



Bedspread

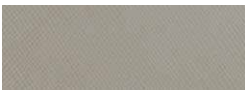


Residential Vinyl Flooring



Feature Fabric

### Alpine



Ultraselect Choice: Gray



Walnut



Wall Board



Ultraselect Choice: Light Patterned



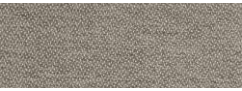
Countertop



Bedspread

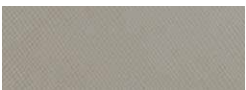


Residential Vinyl Flooring



Feature Fabric

### Mineral



Ultraselect Choice: Gray



Sonoma



Wall Board



Ultraselect Choice: Light Patterned



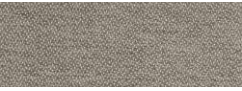
Countertop



Bedspread



Residential Vinyl Flooring



Feature Fabric

